



**Aerospace  
Conveyance Systems**

Aircraft Band Clamps

- Long Life
- Vibration Proof
- Corrosion Resistant
- Simplified Stock
- Numerous Sizes



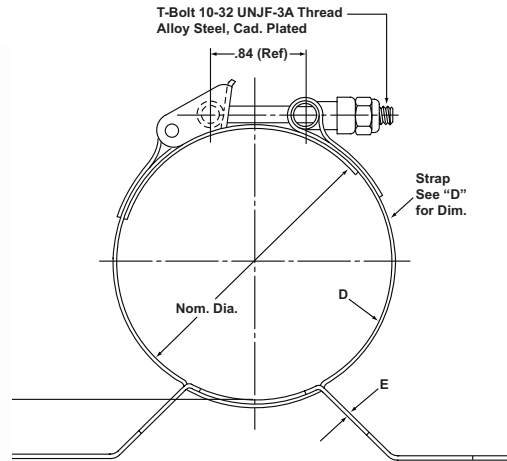
# Stainless Steel Cradle Support Quick Coupler Latch Clamp

## Cradle Support Latch Clamp

A band clamp with an integral support cradle for mounting purposes.

## Quick-Coupler Clamp

- Particularly suitable for removable equipment.
- Snap-on latch provides instant removal and fast installation.



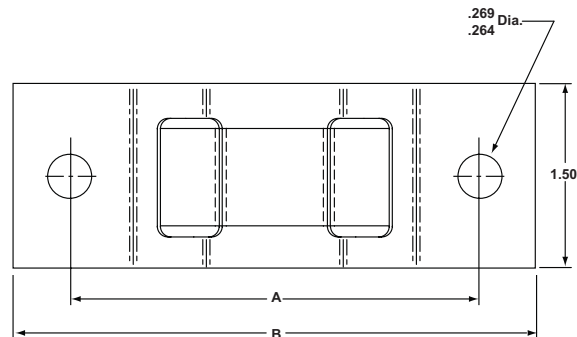
Series Number	914	915	916	917	918	919
Diameter Range	150 thru 250		225 thru 450		450 thru 1400	
Pad*	No	Yes	No	Yes	No	Yes
Dimension A	2.50		2.75		4.00	
Dimension B	3.25		3.50		4.75	
Dimension C	.16		.31		.41	
Dimension D	.020 x 1.00		.020 x 1.00		.025 x 1.00	
Dimension E	.040		.050		.063	

All dimensions in inches

\*1/16 x 1 Cork Neoprene Pad per MIL-T-6841 cemented to inside surface of band and tongue. Nominal diameter taken from band surface — add 1/8" to required I.D. when ordering padded series.

All parts Stainless Steel unless otherwise specified.

Code	Nut Coding		Recommended Use
SH	Self-Locking, Cadmium Plated, Steel		Applications up to 550° (287°C)
S	Self-Locking, Cadmium Plated, Steel		Applications up to 250° (121°C)
D	Plain Hexagon Silver Plated, Stainless Steel, with Lock-wire Hole		Applications up to 800° (426°C)
M	Self-Locking, Silver Plated, Stainless Steel for CRES T-Bolt Only		Applications up to 1200° (648°C)



Part Number Code:

Part Number 9XX-000 X

Nom. dia (100 = 1 inch) \_\_\_\_\_

Nut Code (chart to left) \_\_\_\_\_

# Lug and Clip Support T-Bolt Latch Clamps

## T-Bolt Clamps

- Provide even circumferential take-up
- Assure efficient seal for all types of hose and duct connections.



T-bolt Latch Lug Support Clamp



T-Bolt Latch Clip Support Clamp

	Lug Support Clamp	Clip Support Clamp
Clamp with T-Bolt Latch Part Number	901	902
Clamp With Quick-Coupler Latch Part Number	900	903

All dimensions in inches

## Lug Support Clamp

**Part Number Code** **900 - 500 - 3 - 10A S**  
**901 - 500 - 3 - 10A S**

Part Number \_\_\_\_\_

T-Bolt Code \_\_\_\_\_  
 - = Alloy Steel  
 A or C = A286 CRES

Nom. Diameter (100=1.00 in.) \_\_\_\_\_  
 Min = 1.25  
 Max. = 30.00

Number of Lugs \_\_\_\_\_

Tongue \_\_\_\_\_  
 - = none  
 T = with tongue

Bolt Length (dash no. same as ANS bolt) \_\_\_\_\_

Nut Code (See Nut Code on Page 2) \_\_\_\_\_

## Clip Support Clamp

**Part Number Code** **902 - 500 - 3 S**  
**903 - 500 - 3 S**

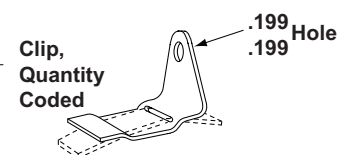
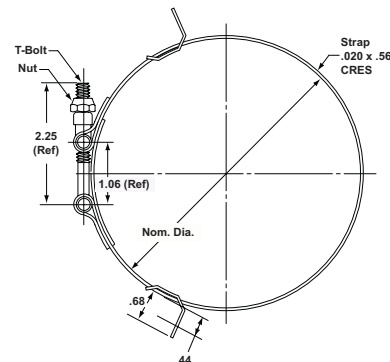
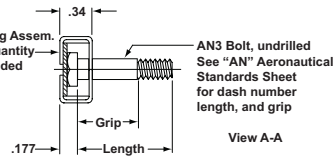
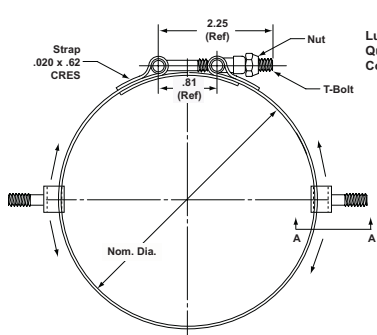
Part Number \_\_\_\_\_

T-Bolt Code \_\_\_\_\_  
 - = Alloy Steel  
 C = A286 CRES

Nom. Diameter (100= 1.00 in.) \_\_\_\_\_  
 Min. = 1.25  
 Max. = 30.00

Number of Lugs \_\_\_\_\_

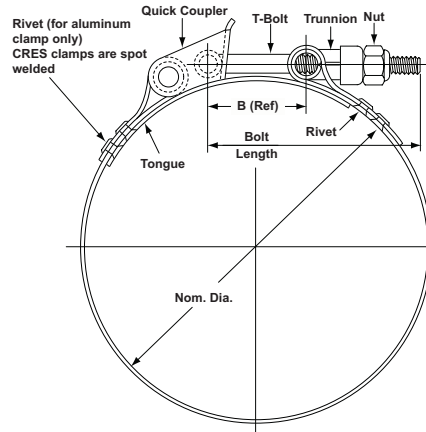
Nut Code (See Nut Code on Page 2) \_\_\_\_\_



# Quick-Coupler Clamp

## Quick-Coupler Clamp

- Particularly suitable for removable equipment.
- Snap-on latch provides instant removal and fast installation.



<b>Series Number</b>	Stainless Steel	360	—	365	—	450	—	455	—	550	—	555	—
<b>Series Number</b>	Aluminum	—	361	—	366	—	451	—	456	—	551	—	556
	Minimum Width	.50	.62	.52	.62	.75	.75	.75	.75	.88	.88	.88	.88
	Maximum Width	1.75	1.00	2.25	1.00	2.50	2.50	2.50	2.50	3.00	3.00	3.00	3.00
	Dimension B (Ref.)	.81	.81	1.19	1.19	1.25	1.25	2.00	2.00	1.25	1.25	2.00	2.00
<b>Band Gage</b>	Stainless Steel	.020	—	.020	—	.025	—	.025	—	.050	—	.050	—
	Aluminum	—	.032	—	.032	—	.032	—	.032	—	.063	—	.063
<b>Band Material</b>	Stainless Steel	301 1/4 or 1/2 Hard Stainless Steel											
	Aluminum	6061 — T4 or T6 Aluminum Alloy											
<b>Bolt</b>	UNJF-3A per AS8879 Size	10-32 X 1.75		10-32 X 2.25		1/4-28 X 2.50		1/4-28 X 3.50		5/16-24 X *		5/16-24 X *	
	Material	See Part Number Code Below											
	Minimum Diameter	1.25	1.25	1.38	3.00	1.75	4.00	4.00	7.00	3.25	3.00	6.50	6.50
<b>Diametrical Adjustment</b>	Plus	.03	.03	.09	.09	.04	.04	.14	.14	$\triangle 1$	$\triangle 1$	.16	.16
	Minus	.10	.10	.25	.25	.20	.20	.50	.50	$\triangle 1$	$\triangle 1$	.50	.50

All dimensions in inches

\* See table below for bolt length

## Part Number Code

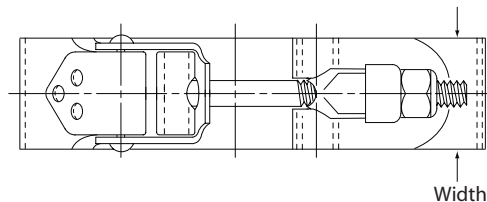
**360 C 75 - 300 M**

Series Number \_\_\_\_\_  
 Bolt Material (See below) \_\_\_\_\_  
 Width in 1/8" increments (100=1 in.) \_\_\_\_\_  
 Nom. Dia. (100 = 1 in.) \_\_\_\_\_  
 Nut Code (See Nut Code on Page 2) \_\_\_\_\_

NOTE: In some instances, the strap width exceeds T-bolt, trunnion and latch widths.

All clamps (except 500 series) are furnished with alloy bolts. If a stainless steel bolt is required, add "C" where indicated in Part No. Code. 500 series clamps furnished with stainless steel bolt only.

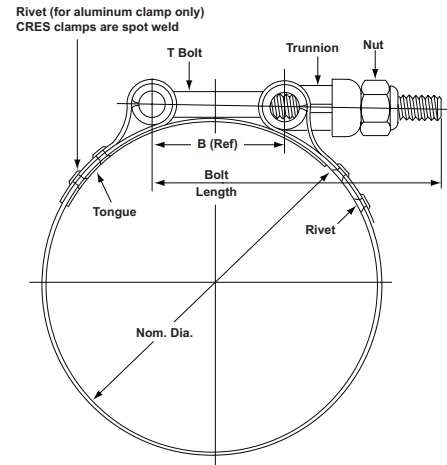
A or C = A286 per AMS 5732/5737  
 Alloy Bolt = 4037 or 8740 alloy steel



Diameter Range	$\triangle 1$		Bolt Length for Series Shown			
	Plus	Minus	550	551	555	556
3.50 to 5	.10	.14	3.00			
5 to 10	.16	.14	3.50		4.50	
10 to 20	.17	.14	4.00		5.00	
20 and over	.24	.14	4.50		5.50	

## T-Bolt Clamps

Provide even circumferential take-up and assure efficient seal for all types of hose and duct connections.



<b>Series Number</b>	Stainless Steel	320	—	325	—	420	—	425	—	520	—	535	—	620	625
<b>Series Number</b>	Aluminum	—	321	—	326	—	421	—	426	—	521	—	536	—	—
	Minimum Width	.50	.62	.50	.62	.62	.75	.62	.75	.88	.88	.88	.88	1.00	1.00
	Maximum Width	1.00	1.50	1.75	2.25	1.75	2.50	2.25	1.50	3.00	3.00	3.00	3.00	2.00	2.00
	Dimension B (Ref.)	.81	.81	1.19	1.19	1.19	1.19	2.00	2.00	1.25	1.25	2.00	2.00	1.38	2.00
<b>Band Gage</b>	Stainless Steel	.020	—	.020	—	.025	—	.025	—	.050	—	.050	—	.063	.063
	Aluminum	—	.032	—	.032	—	.032	—	.032	—	.063	—	.063	—	—
<b>Band Material</b>	Stainless Steel	301 1/4 or 1/2 Hard Stainless Steel													
	Aluminum	6061 — T4 Aluminum Alloy													
<b>Bolt</b>	UNJF-3A per AS8879 Size	10-32 X 1.75		10-32 X 2.25		1/4-28 X 2.50		1/4-28 X 3.50		5/16-24 X *		5/16-24 X *		3/8-24 x *	3/8-24 x *
	Material	See Part Number Code Below													
	Minimum Diameter	1.18	1.50	1.75	2.50	1.50	2.50	4.56	7.00	3.00	3.00	6.00	5.12	4.00	7.00
<b>Diametrical Adjustment</b>	Plus	.03	.03	.06	.06	.06	.06	.16	.16	.09	.09	.16	.16	.09	.16
	Minus	.10	.10	.22	.22	.22	.22	.47	.47	.15	.15	.50	.50	.14	.37

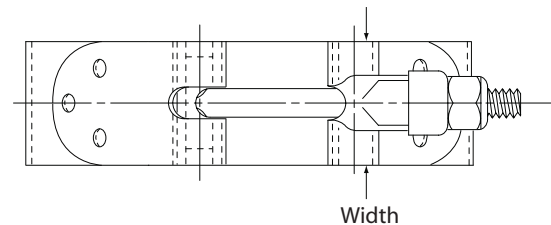
All dimensions in inches

\* See table below for bolt length

## Part Number

**320 C 75 - 300 M**

Series Number \_\_\_\_\_  
 Bolt Material (See below) \_\_\_\_\_  
 Width in 1/8" increments (100 = 1 in.) \_\_\_\_\_  
 Nom. Dia. (100 = 1 in.) \_\_\_\_\_  
 Nut Code (See Nut Code on Page 2) \_\_\_\_\_



NOTE: In some instances the strap width exceeds T-bolt, trunnion and latch widths.

All clamps (except 500 and 600 series) are furnished with alloy bolts. If a stainless steel bolt is required, add "C" where indicated in Sample Part No., Code. 500 and 600 series clamps furnished with stainless steel bolt only.

A or C = A286 per AMS 5732/5737  
 Alloy Bolt = 4307 or 8740 alloy steel

Diameter Range	Bolt Length for Series Shown					
	520	521	535	536	620	625
3 to 5	3.00	—	—	—	—	—
5 to 10	3.50	—	4.50	—	3.50	4.50
10 to 20	4.00	—	5.00	—	4.00	5.00
20 and over	4.50	—	5.50	—	4.50	5.50

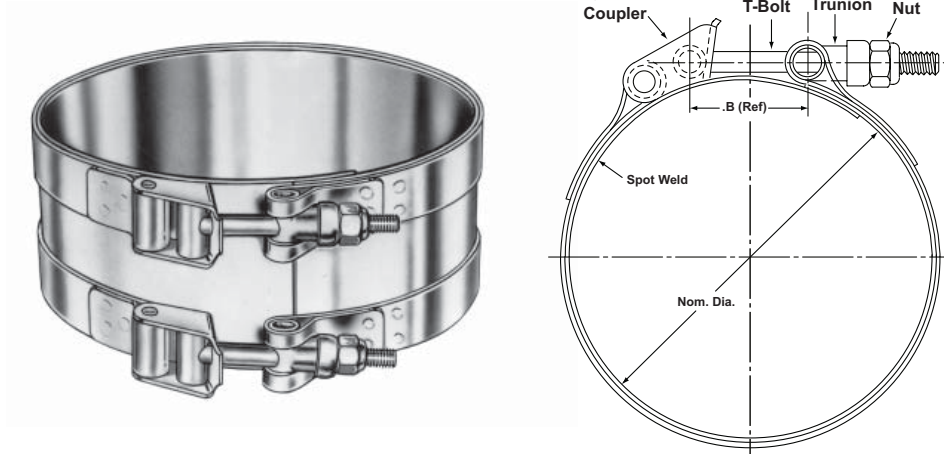
# Quick-Coupler Latch Multiple Take-up Clamp

## Multiple Take-Up Clamp

- Used as a sleeve, collar, or cover.
- Adaptable for extra wide joints.
- Available with either T-Bolt or Quick-Coupler latch.

## Quick-Coupler Clamp

- Particularly suitable for removable equipment.
- Snap-on latch provides instant removal and fast installation.



Series Number		336	338	446	448
Sleeve Minimum Width		1.50	1.50	2.00	2.00
Sleeve Maximum Width		6.00	6.00	6.00	6.00
Strap Width		.62	.62	.75	.75
Dimension B (Ref.)		.81	1.19	1.19	2.06
Sleeve/Strap	Gage	.020/.020	.020/.025	.025/.025	.025/.032
	Material	301 1/4 or 1/2 Hard Stainless Steel			
Bolt	UNJF-3A per AS8879 Size	10-32 X 1.75	10-32 X 2.25	1/4-28 X 2.50	1/4-28 X 3.50
	Material	See Part Number Code Below			
Minimum Diameter		2.00	3.00	4.00	7.00
Diametrical Adjustment	Plus	.03	.06	.06	.14
	Minus	.10	.25	.25	.50

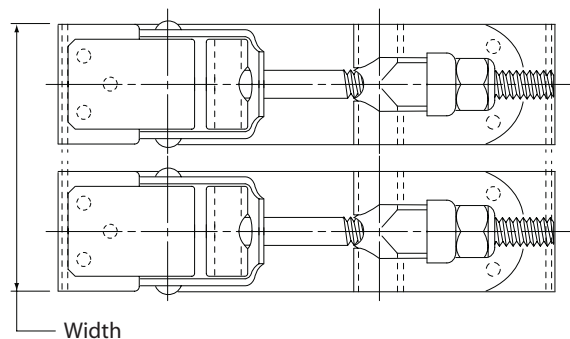
## Part Number

**336 C 75 - 550 M**

Series Number \_\_\_\_\_  
 Bolt Material (see below) \_\_\_\_\_  
 Width in 1/8" increments (100 = 1 in.) \_\_\_\_\_  
 Nom. Dia. (100 = 1 in.) \_\_\_\_\_  
 Nut Code (See Nut Code on Page 2) \_\_\_\_\_

\*All clamps are furnished with alloy bolts. If a stainless steel bolt is required, add "C" where indicated in Sample Part No. Code.

A or C = A286 per AMS 5732/5737  
 Alloy Bolt = 4037 or 8740 alloy steel





# Maximum Recommended Net T-Bolt Torque

Installation Torque = Net Torque + Nut Free Running Torque

Nut Free Running Torque Varies with Nut Style

<b>Part Number</b>	<b>Torque Inch Pounds</b>	<b>Part Number</b>	<b>Torque Inch Pounds</b>
320	*	520	200
321	*	521	100
325	50	535	200
326	25	536	100
336	50	550	200
338	50	551	75
360	50	555	200
361	25	556	75
365	50	620	*
366	25	625	300
420	50	900	40
421	40	901	40
425	50	902	40
426	40	903	40
446	70	914	50
448	70	915	50
450	70	916	50
451	40	917	50
455	70	918	50
456	40	919	50

\*See drawing

**Eaton Corporation**  
**Conveyance Systems**  
Rt. 2, Box 361  
Meadowbrook Road  
Eastanollee, Georgia 30538  
Phone: (706) 779-3351  
Fax: (706) 779-2638  
[www.aerospace.eaton.com](http://www.aerospace.eaton.com)

**Eaton Corporation**  
**Conveyance Systems**  
300 South East Avenue  
Jackson, Michigan 49203-1972  
Phone: (517) 787-8121  
Fax: (517) 787-5758

**Eaton Corporation**  
**Conveyance Systems**  
2500 W. Argyle St.  
P.O. Box 1845  
Jackson, Michigan 49202-1845  
Phone: (517) 787-8121  
Fax: (517) 789-4716

**Eaton Aerospace**  
**Conveyance Systems**  
11642 Old Baltimore Pike  
Beltsville, Maryland 20705  
Phone: (301) 937-4010

**Eaton Aerospace**  
**Conveyance Systems**  
15 Pioneer Ave.  
Warwick, RI 02888  
Phone: (401) 781-4700

**Eaton LTD**  
**Conveyance Systems**  
Broad Ground Road  
Lakeside  
Redditch  
Worcs B98 8YS  
England  
Phone: (44) 152-751-7555  
Fax: (44) 152-751-7556

**Eaton LTD**  
**Conveyance Systems**  
Chemin De Pau  
64121 Serres-Castet  
France  
Phone: (33) 559-333-864  
Fax: (33) 559-333-865

**Eaton Aerospace**  
**Conveyance Systems**  
2 Rue Lavoistier BP 54 78310  
Coignieres, France  
Phone: +33 1-30-69-3000

**Eaton LTD**  
**Conveyance Systems**  
Posttach 1026  
Carl -Benz-Strasse 9  
D-82205 Gilching  
Germany  
Phone: (49) 810-575-0  
Fax: (49) 810-575-27

